

UPDATE (16-Nov-2015)
VOLCANIC ASH CLOUD IMPACT ON DENPASAR AIRPORT, BALI,
INDONESIA

Date	Mount	Current Status	Airport Closure (Bali)
Monday, 16 November 2015	Barujari		None

	Warning
	Watch
	Advisory
	Normal

Details:

Mount Barujari is located within the caldera of mount Rinjani in Lombok, Nusa Tenggara Barat. Latest update 13 November 2015 the status of mount Barujari is still on “watch” condition. This due to the present of volcanic ash caused by eruption activity. The latest satellite image on 8 November 2015 showed that the volcanic ash is likely more localized above Nusa Tenggara Barat (Fig. 1). Airport closure (Ngurah Rai International Airport) is very dependent on the wind direction and rain. There was no information on airport closure up until now.

Map:

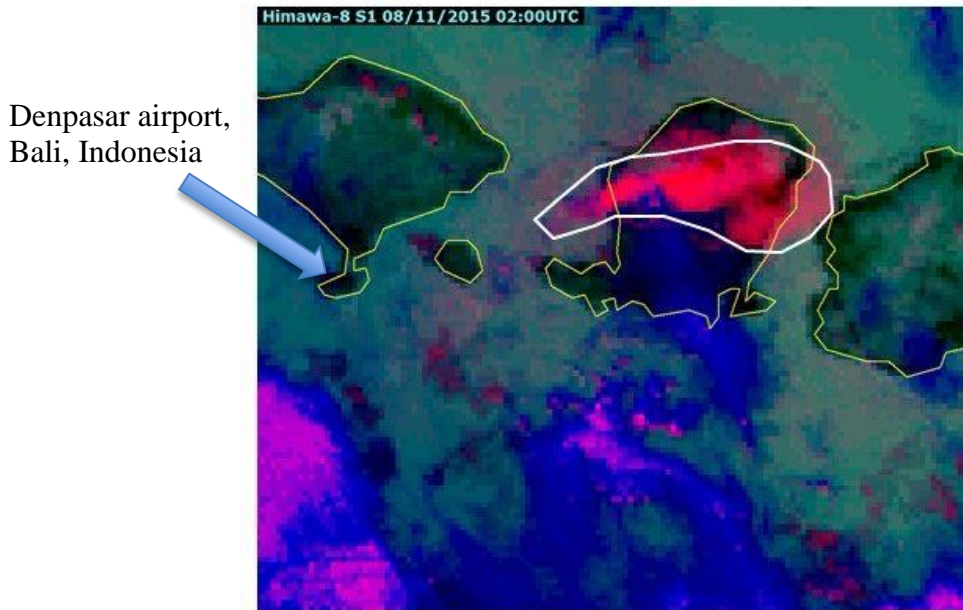


Figure 1. Map of volcanic ash movement generated from Himawari weather satellite as per 8 November 2015 at 09.00 GMT+7 (Official release from Indonesian Agency of Meteorology, Climatology and Geophysics)