

**UPDATED FISHERY INDICATORS FOR SHORTFIN MAKO SHARK (*Isurus oxyrinchus*) CAUGHT BY THE PORTUGUESE PELAGIC LONGLINE FISHERY IN THE INDIAN OCEAN: CATCH, EFFORT AND STANDARDIZED CPUES**

Rui Coelho<sup>1\*</sup>, Catarina Santos<sup>1</sup>, Daniela Rosa<sup>1</sup>

*SUMMARY*

*This working document provides updated fishery indicators for the shortfin mako shark captured by the Portuguese pelagic longline fishery in the Indian Ocean, in terms of catches, effort and standardized CPUEs. The analysis was based on data collected from fishery observers, skipper's logbooks (self sampling) and official logbooks collected between 1998 and 2018. The CPUEs were analyzed for the Indian Ocean and compared between years, and were modeled with tweedie GLM models for the CPUE standardization procedure. In general, there was a large variability in the CPUE trends, with the standardized CPUEs relatively similar to the nominal trend and showing a general increasing trend, especially in recent years.*

**KEYWORDS:** *Bycatch, fishery indicators, standardized CPUEs, pelagic longline fishery, shortfin mako shark.*

---

<sup>1</sup> : IPMA - Portuguese Institute for the Ocean and Atmosphere. Av. 5 de Outubro s/n, 8700-305 Olhão, Portugal.  
\*: Corresponding author: Rui Coelho; e-mail: rpcoelho@ipma.pt

## 1. Introduction

The Portuguese pelagic longline fishery in the Indian Ocean started in the late 1990's in the southwest area (SW-IO) and has traditionally targeted swordfish (*Xiphias gladius*, SWO). However, in certain areas and seasons this fishery also catches relatively high quantities of sharks, particularly blue shark (*Prionace glauca*, BSH) (Santos et al., 2013, 2014; Coelho et al., 2014).

The Portuguese fishing vessels operating in the IOTC area consist only of pelagic longliners setting shallow night sets targeting swordfish, traditionally ranging in size from 35 to about 50m. The number of vessels licensed increased from the beginning of the fishery in 1998 (five vessels) until 2009 (24 vessels). The number of active vessels followed a similar trend, with a peak in 2006 (17 vessels). However, during the last years, the active vessels in the convention area decreased to as low as three in recent years.

Standardized shortfin mako CPUE indices from EU.Portugal have been presented to the IOTC Working Party on Ecosystems and Bycatch (WPEB) in 2013 and 2017 (Coelho et al., 2013, 2017). In 2014, a thorough revision was made on the modeling approach, including sensitivity analyses for the model type, using the ratio factor as a proxy for targeting, and the definition of areas in the Indian Ocean (Coelho et al., 2014).

In this work, we update fishery indicators for the shortfin mako from the EU.Portugal fleet. The objectives of this study were therefore to provide an updated description of the SMA catches by the Portuguese pelagic longline fishery operating in the Indian Ocean between 1998 and 2018, including information on the catch, effort and CPUE trends, including providing a standardized CPUE for consideration in the upcoming stock assessment.

## 2. Materials and methods

### 2.1. Data collection

Data used includes information on catches, fishing effort in number of hooks per set and geographical location integrated from VMS data and covers close to 100% of the entire fishery (**Table 1**).

**Table 1:** Number of fishing sets with catch, effort and location information carried out by the Portuguese pelagic longline fleet in the Indian Ocean between 1998 and 2018 and used for this analysis. Note that the first 2 years of the series (1998 and 1999) were not used for the CPUE standardization analysis due to lower effort in the Indian Ocean.

Year	Number of sets (N)
1998	113
1999	147
2000	275
2001	631
2002	687
2003	575
2004	370
2005	143
2006	1801
2007	1325
2008	238
2009	482
2010	457

2011	633
2012	516
2013	1312
2014	978
2015	1415
2016	1699
2017	1618
2018	893
<b>Total</b>	<b>16308</b>

## 2.2. Data analysis

Operational data at the fishing set level was used, with the catch data referring to the total (round) weight of shortfin makos captured per fishing set. The available catch data started in 1998 and was available until 2018. However, the first 2 years of the series (1998 and 1999) were not used in the models because there was limited information in those initial years of the fisheries. For the CPUE standardization, the response variable considered for this study was catch per unit of effort (CPUE), measured as biomass of live fish (kg) per 1000 hooks deployed. The standardized CPUEs were estimated with Generalized Linear Models (GLMs).

Coelho et al. (2014) tested 10 sensitivity runs in blue shark CPUE standardization models, including sensitivities to the model type, the use of ratio factor and the definition of the area effects. The base case used for the present work is based on the best model approaches selected in that work. Additionally, Coelho et al. (2015a) tested targeting effects to this fleet by using ratios and cluster analysis, demonstrating that both had very similar behaviours in this particular fleet (fleet targeting mainly SWO but with blue shark as a secondary target).

As the shortfin mako shark is a bycatch from the fishery, there were considerable trips or sub-trips with zero catches that result in a response variable of CPUE=0. As these zeros can cause mathematical problems when fitting the models, a tweedie model was used, as described in Coelho et al. (2012b and 2017) for the SMA CPUE standardization for the Portuguese fleet in the Atlantic Ocean.

The tweedie model uses an approach in which only one model is fitted to the data, with that model handling the mixture of continuous positive values with a discrete mass of zeros. The tweedie distribution is part of the exponential family of distributions, and is defined by a mean ( $\mu$ ) and a variance ( $\phi\mu^p$ ), in which  $\phi$  is the dispersion parameter and  $p$  is an index parameter. In this study, the index parameter ( $p$ -index) was calculated by maximum likelihood estimation (MLE).

Based on the sensitivities and tests reported by Coelho et al. (2014), the covariates considered and tested in the base case models for this work were:

- Year: analyzed between 2000 and 2018;
- Quarter of the year: 4 categories: 1 = January to March, 2 = April to June, 3 = July to September, 4 = October to December;
- Area: Using a GLM Tree area stratification based on Ichinokawa & Brodziak (2010) approach, in this case with 7 areas selected;
- Ratio: based on the SWO/SWO+BSH ratio of captures;
- Interactions: first order interactions were tested and would be used if significant with the AIC criteria;

Interactions were considered and tested in the models. Specifically, interactions not involving the year factor were considered as fixed factors in the GLM, while interactions involving the year factor were considered as random variables within GLMMs.

The significance of the explanatory variables was assessed with likelihood ratio tests comparing each univariate model to the null model (considering a significance level of 5%), and by analyzing the deviance explained by each covariate. Goodness-of-fit and model comparison was carried out with the Akaike Information Criteria (AIC). Model validation was carried out with a residual analysis. The final estimated indexes of abundance were calculated by Least Square Means (marginal means), that for comparison purposes were scaled by the mean standardized CPUE in the time series.

The ratio factor was defined as the percentage of swordfish catches related to combined swordfish and blue shark catches. This ratio is in general considered a good proxy indicator of target criteria more clearly directed at swordfish versus a more diffuse fishing strategy aimed at the two main species (SWO and BSH). Moreover, it has been consistently applied to other fleets that have a similar method of operation, such as the Spanish fleet, with applications both to the Atlantic and the Indian Ocean (e.g., Ramos-Cartelle et al., 2011; Mejuto et al., 2012; Santos et al., 2013; Coelho et al., 2015a). The ratio factor was calculated for each set and then divided into ten categories using the 0.1 quantiles. However, a work from (He et al., 1997) suggested the use of cluster analysis to define target effects as explanatory variables in the standardization models. This approach has been used with success in the Indian Ocean by Wang and Nishida (2014) for swordfish, and has also been tested in blue shark both in the North Atlantic by Coelho et al. (2015b) and Indian Ocean by Coelho et al. (2015a). In those later studies, this approach was tested as a sensitivity analysis but not selected in the final model as the EU/Portugal fleet consistently targets SWO and to a less extent BSH, and as such the information obtained with the cluster analysis is very similar to using SWO/BSH ratios.

Data analysis for this paper was carried out in the R language for statistical computing 3.6.1 (R Core Team, 2019). The plots were designed using library "ggplot2" (Wickham, 2009) and the maps using libraries "maps" (Richard et al., 2014), "maptools" (Bivand and Lewin-Koh, 2013), "mapplots" (Gerritsen, 2014) and "shapefiles" (Stabler, 2013). Additional libraries used in the analysis included "classInt" (Bivand, 2013), "nortest" (Gross and Ligges, 2012), "car" (Fox and Weisberg, 2011), "perm" (Fay and Shaw, 2010), "doBy" (Højsgaard et al., 2014), "tweedie" (Dunn, 2014), "statmod" (Smyth et al., 2015) and "lsmeans" (Lenth, 2015).

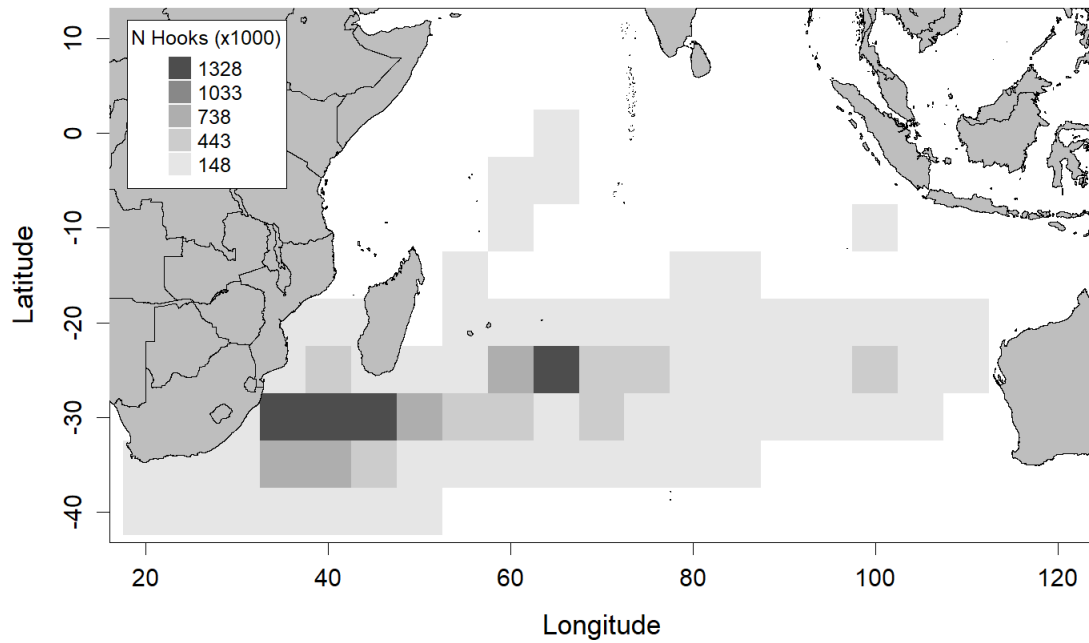
### 3. Results and Discussion

#### 3.1. Catch and effort

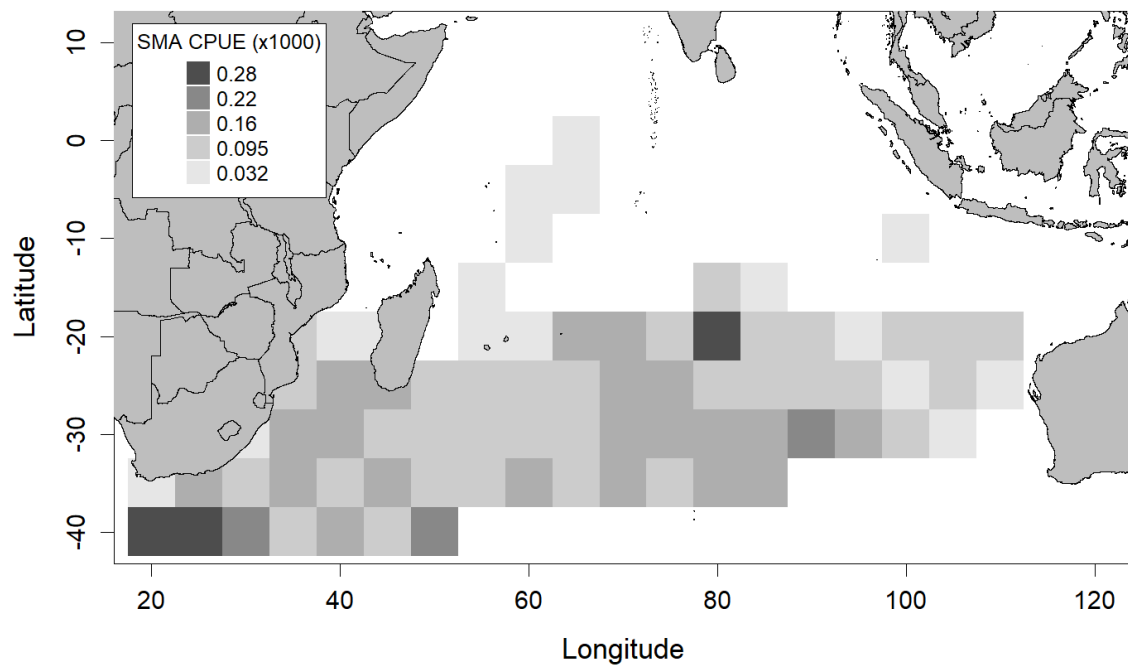
##### 3.1.1. Spatial distribution of the catch and effort

The area of operation in the Indian Ocean in terms of fishing effort for the Portuguese pelagic longline fleet, for the period between 1998 and 2018, is shown in **Figure 1**, where it is possible to see that most of the effort took place in the southwest region of the Indian Ocean. However, part of the effort also takes place in more eastern areas of the South Indian Ocean.

The SMA catches are also spread throughout the Indian Ocean, but also follow the general trend of a higher concentration in the southwest region, especially southern of South Africa (**Figure 2**).



**Figure 1.** Effort distribution of the Portuguese pelagic longline fleet for the 1998-2018 period in the Indian Ocean. The effort is represented in 5°x5° grids with darker colors representing areas with more effort in number of hooks.



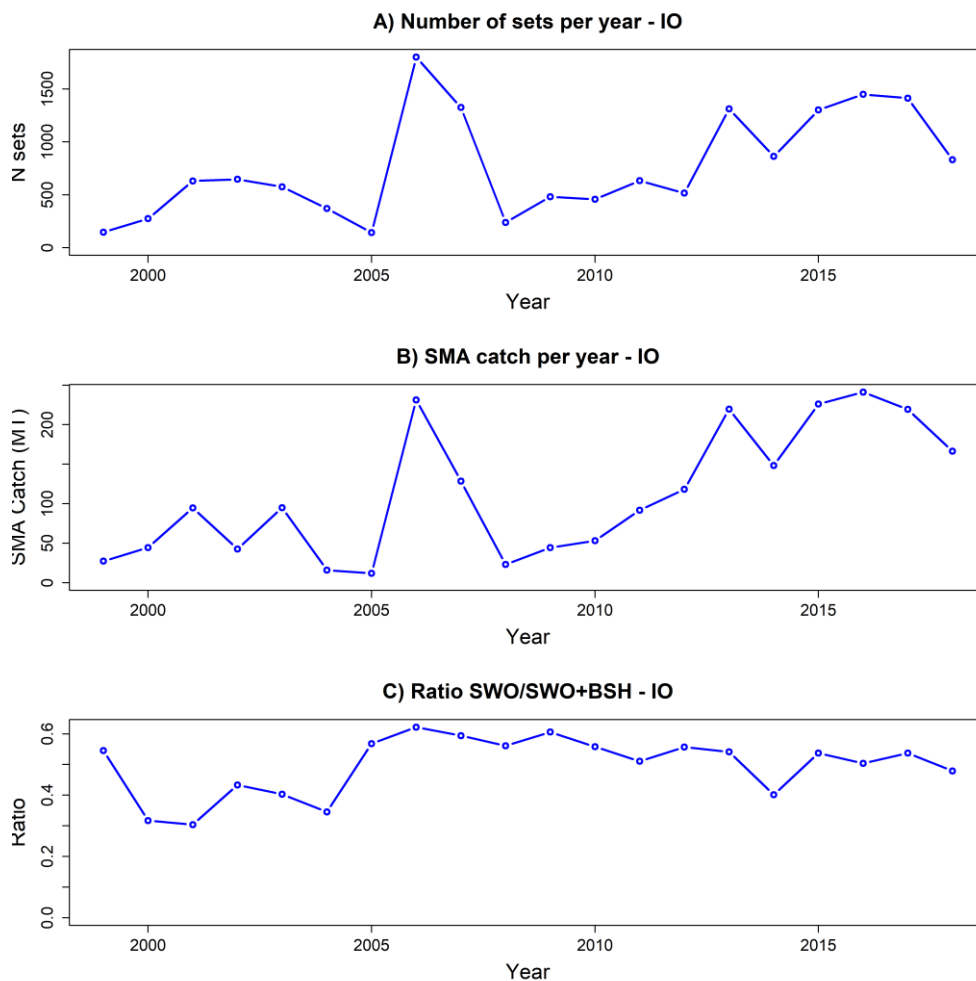
**Figure 2.** Distribution of SMA CPUEs in the Portuguese pelagic longline fleet for the 1998-2018 period in the Indian Ocean. The effort is represented in 5°x5° grids with darker colors representing areas with higher SMA CPUEs in biomass (kg/1000 hooks).

### 3.1.2. Yearly and seasonal variability in the catch and effort

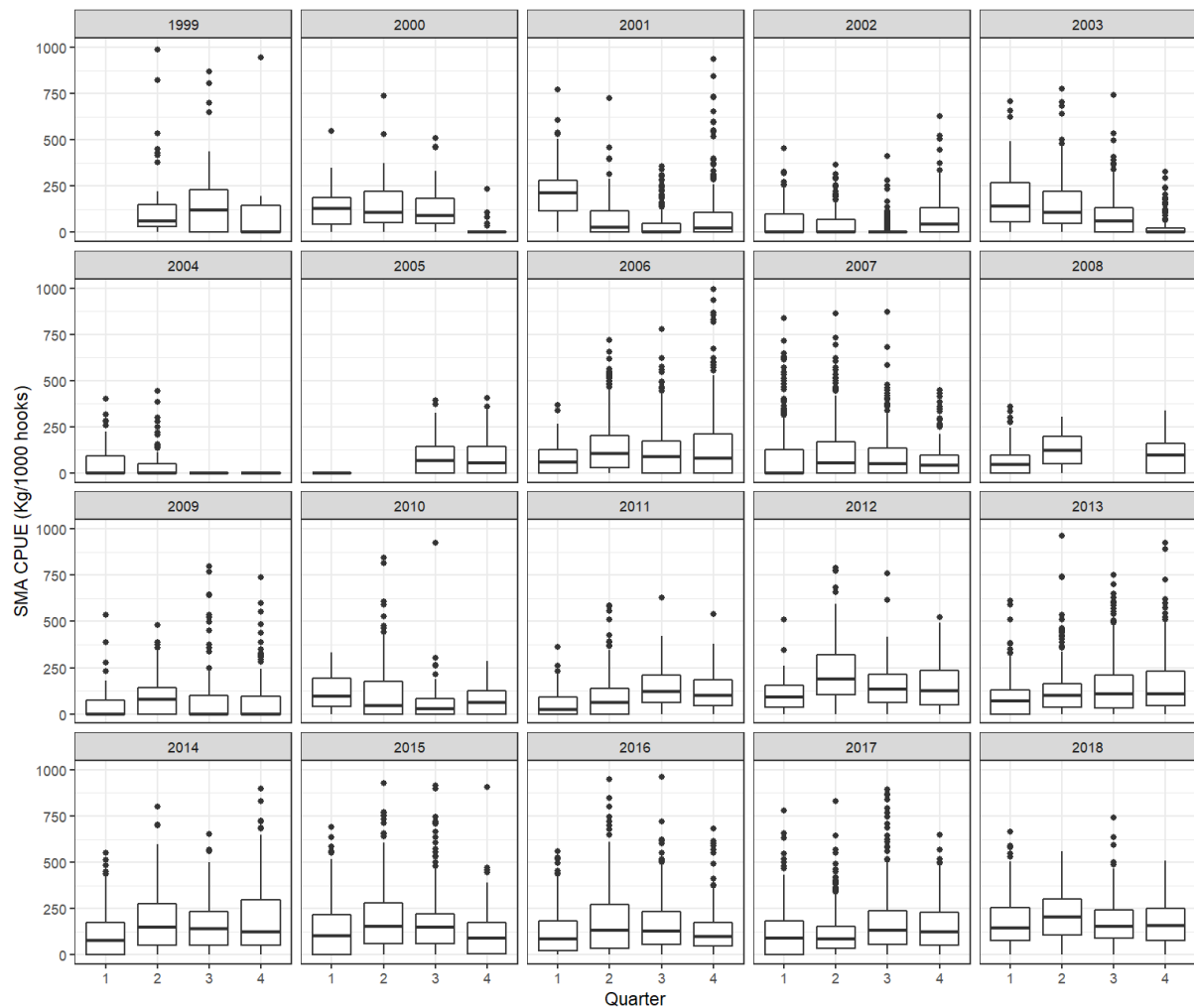
The total effort of the Portuguese longline fleet in the Indian Ocean remained relatively constant between 1999 and 2004, followed by an increase during 2006–2007 and then a sharp decrease in 2008 (**Figure 3**). Since then, and for the most recent years (2009 to 2018) the effort has been increasing to values higher than in the early 2000's and closer to the 2006–2007 period (**Figure 3**). The total shortfin mako shark catches also tended to follow this general trend, with a peak in 2006, followed by a sharp decrease in 2008, and then a more steady and progressive increase until 2015, followed by a slight decrease for the more recent years (**Figure 3**).

In terms of ratios of swordfish compared to the swordfish + blue shark catches, the ratios were higher in the first 2 years of the time series, then tended to be lower between 2000 and 2005, followed by a higher period between 2005 and 2013, and then a decrease in 2014 (**Figure 3**). The increase after 2004 might be a result of a change in the fishery, namely in terms of gear material, i.e. the replacement of the traditional multifilament by nylon monofilament gear which provides higher swordfish catches. Whereas, the slight decrease after 2009 is probably related to another change in the fishing gear (nylon monofilament replaced by wire leaders) and bait (mackerel alternating with squid, or instead of, in areas/periods of higher shark abundance). Several authors have demonstrated that higher blue shark catch rates are obtained when wire leaders are used (e.g., Ward et al., 2009; Vega and Licandeo, 2009; Afonso et al., 2012).

In terms of seasonality in the CPUE, and even though there was some considerable inter-annual variability, there were no major seasonal trends in the CPUEs (**Figure 4**).



**Figure 3.** Descriptive plots of the total effort in sets (A), the total catch of shortfin mako shark (B), and the ratio of swordfish compared to the swordfish and blue shark catches (C) for the Portuguese longline fleet operating in the Indian Ocean.



**Figure 4.** Quarterly shortfin mako shark CPUE (kg/1000 hooks) by the Portuguese pelagic longline fleet in the Indian Ocean, per year. In the boxplots the middle lines represent the median, the box the quartiles, the whiskers the non-outlier range and the points the outliers.

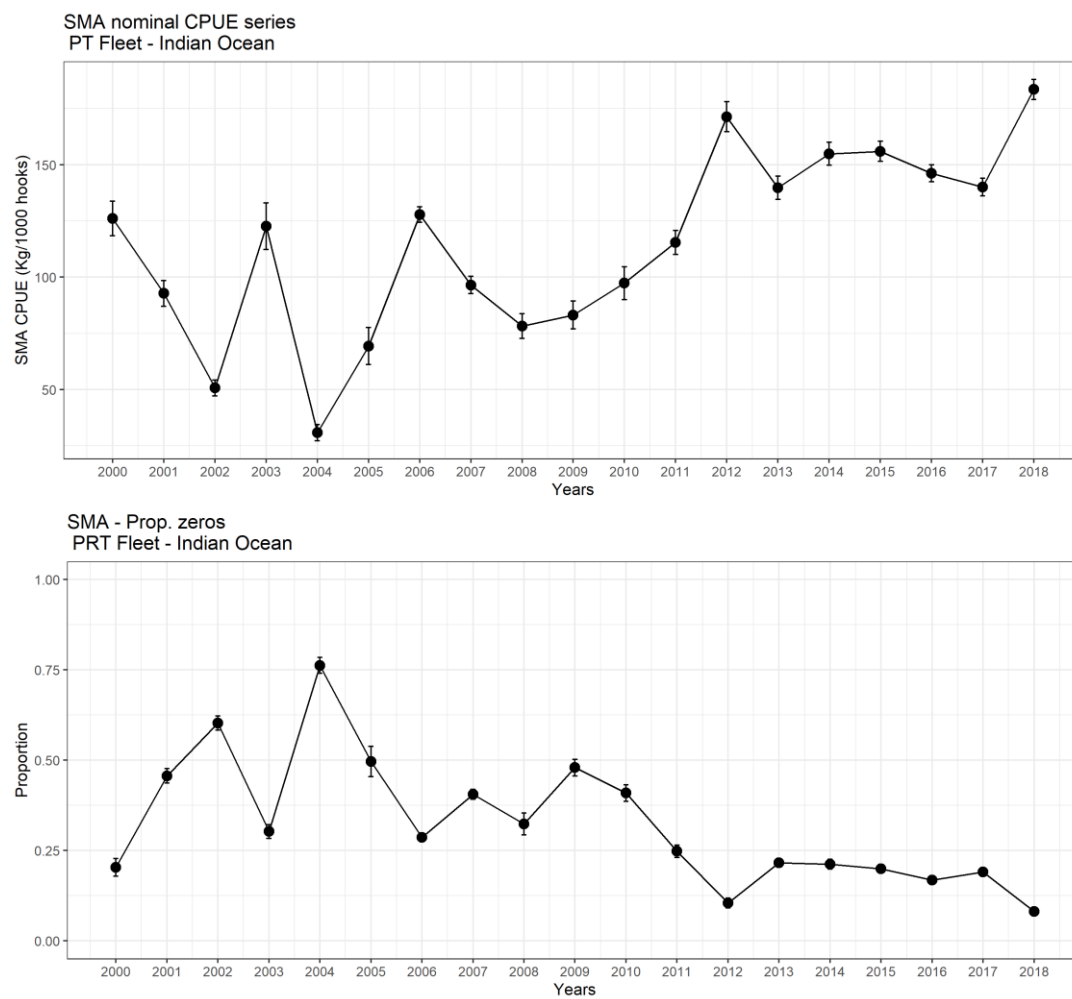
### 3.2. CPUE trends and standardization

#### 3.2.1. CPUE data characteristics

The nominal time series of SMA CPUE for the Portuguese pelagic longline fleet operating in the Indian Ocean is presented in **Figure 5**. In general, there was some large oscillations in the earlier period, and a general increasing trend in the more recent years ((**Figure 5**).

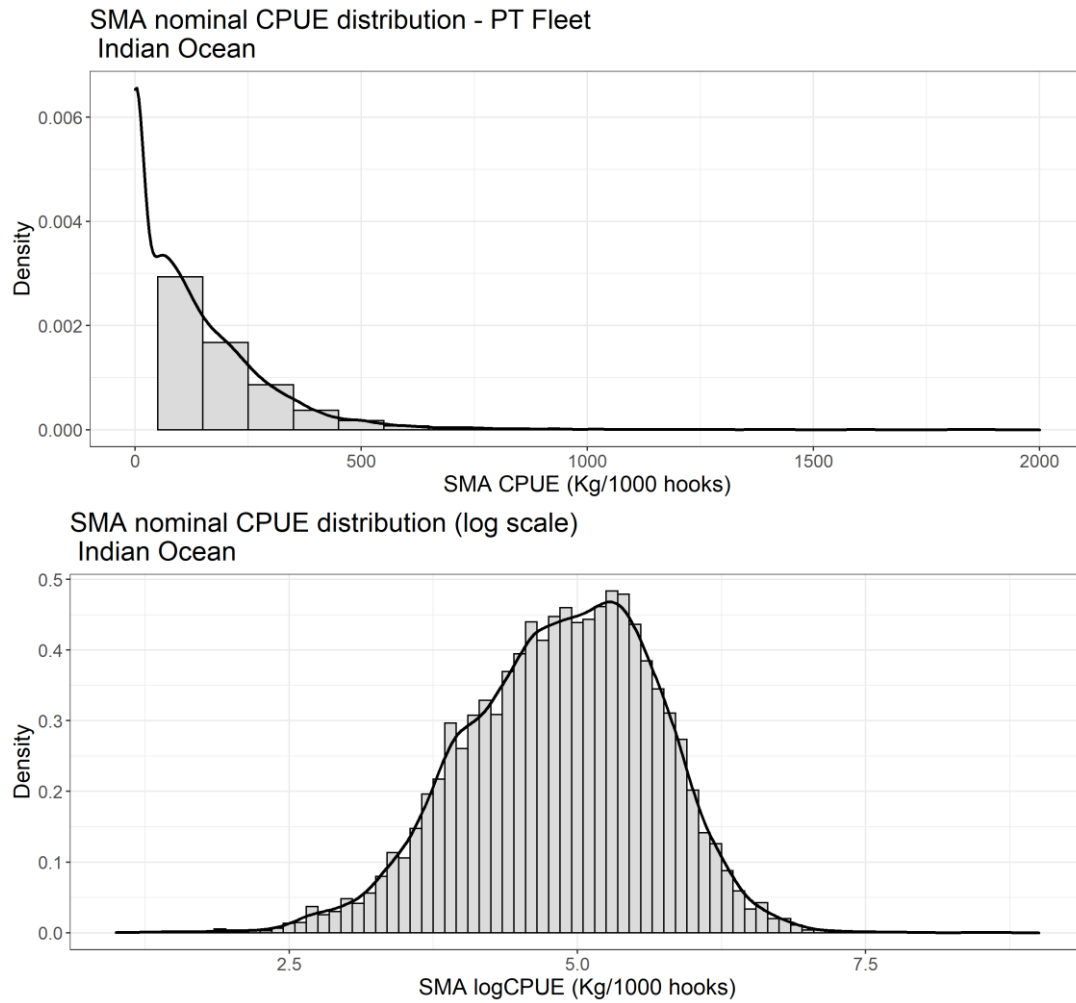
The percentage of fishing sets with zero catches of SMA in the Indian Ocean was relatively high, specifically 28.3% of the sets, ranging from 8.2% in 2018 to 76.2% in 2004 (**Figure 5**). In general, there were higher proportions of sets with zero SMA catches in the earlier years and the proportion of sets with zero SMA catches decreased for the more recent period (**Figure 5**).

The nominal SMA CPUE distribution was highly skewed to the right and became more normal shaped in the log-transformed scale (**Figure 6**).



**Figure 5.** Nominal CPUE series (kg/1000 hooks) and proportion of zeros for SMA caught by the Portuguese pelagic longline fishery in the Indian Ocean between 2000 and 2018. The error bars refer to the standard errors.

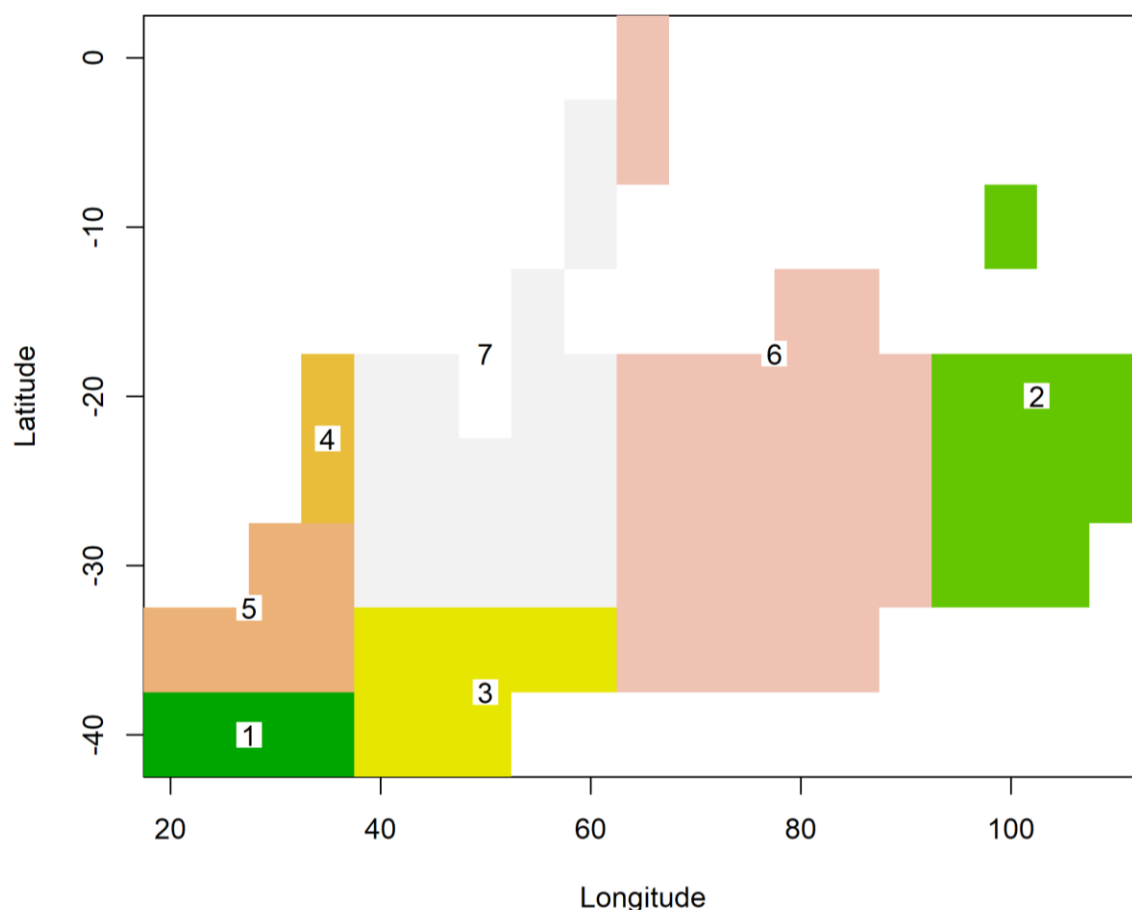




**Figure 6:** Distribution of the nominal shortfin mako shark CPUE captured by the Portuguese longline fleet in the Indian Ocean in non-transformed (top) and log-transformed (bottom) scales.

### 3.2.2. CPUE standardization models

The base case model was based on the best case as tested by Coelho et al. (2013, 2017) using the explanatory variables that were selected then. The area stratifications followed a GLM tree approach for optimization based on the AIC drop. The final areas selected (7 areas) are shown in **Figure 7**.



**Figure 7.** Spatial area stratification for the SMA CPUE captured by the Portuguese longline fleet in the Indian Ocean.

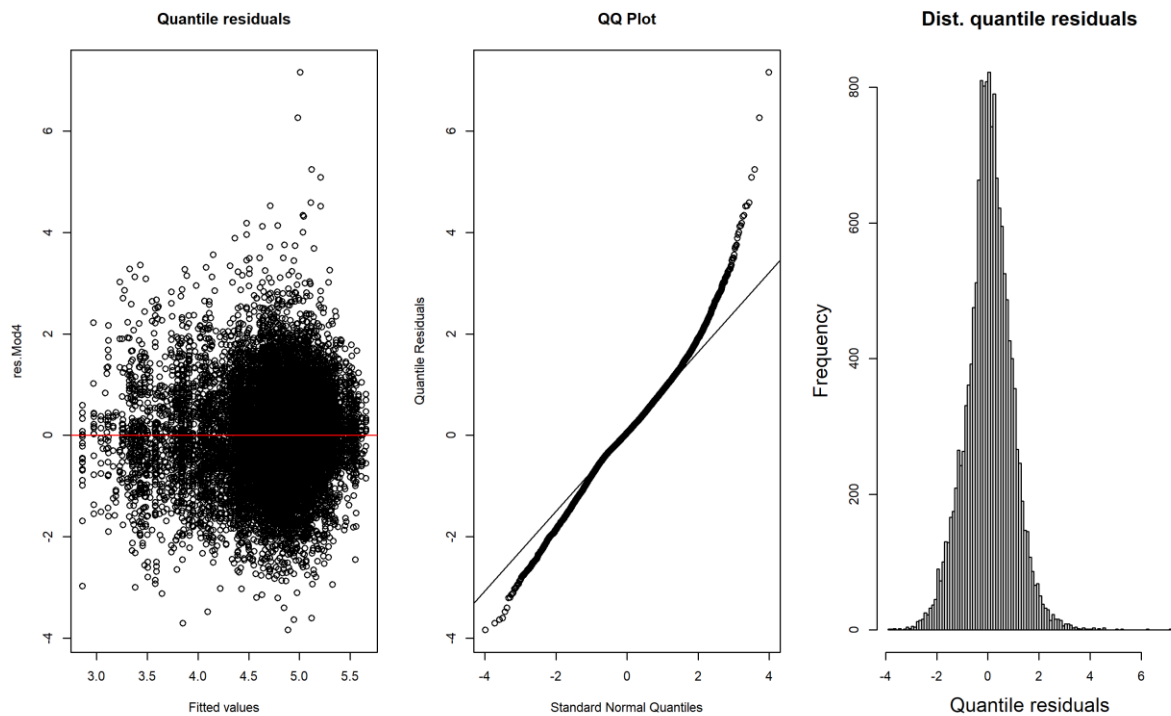
The factors that contributed most for the deviance explanation were the year, followed by the area, and then the quarter:area interaction (**Table 2**). The residual analysis showed no major problems, with the histogram of the residuals distribution being very close to a normal shape, even though it was evident the presence of some outliers along the fitted values (**Figure 8**).

**Table 2.** Deviance table of the parameters used for the SMA CPUE standardization in the Indian Ocean from the Portuguese pelagic longline fleet. For each parameter it is indicated the deviance, the degrees of freedom used (Df), the residual degrees of freedom, the residual deviance, the F statistic and the significance (p-value).

	Df	Deviance	Resid. Df	Resid. Dev	F	Pr(>F)	
NULL			15263	500135			
Year	18	30139.5	15245	469996	53.7749	< 2.2e-16	***
Quarter	3	1200.3	15242	468795	12.8491	2.215e-08	***
AreaCat7.2	4	8215.1	15238	460580	65.9580	< 2.2e-16	***
RatioFac	9	2761.1	15229	457819	9.8526	3.351e-15	***
Quarter:AreaCat7.2	12	5052.2	15217	452767	13.5213	< 2.2e-16	***
Quarter:RatioFac	27	3421.5	15190	449345	4.0698	6.536e-12	***

---

Signif. codes: 0 '\*\*\*' 0.001 '\*\*' 0.01 '\*' 0.05 '.' 0.1 ' ' 1

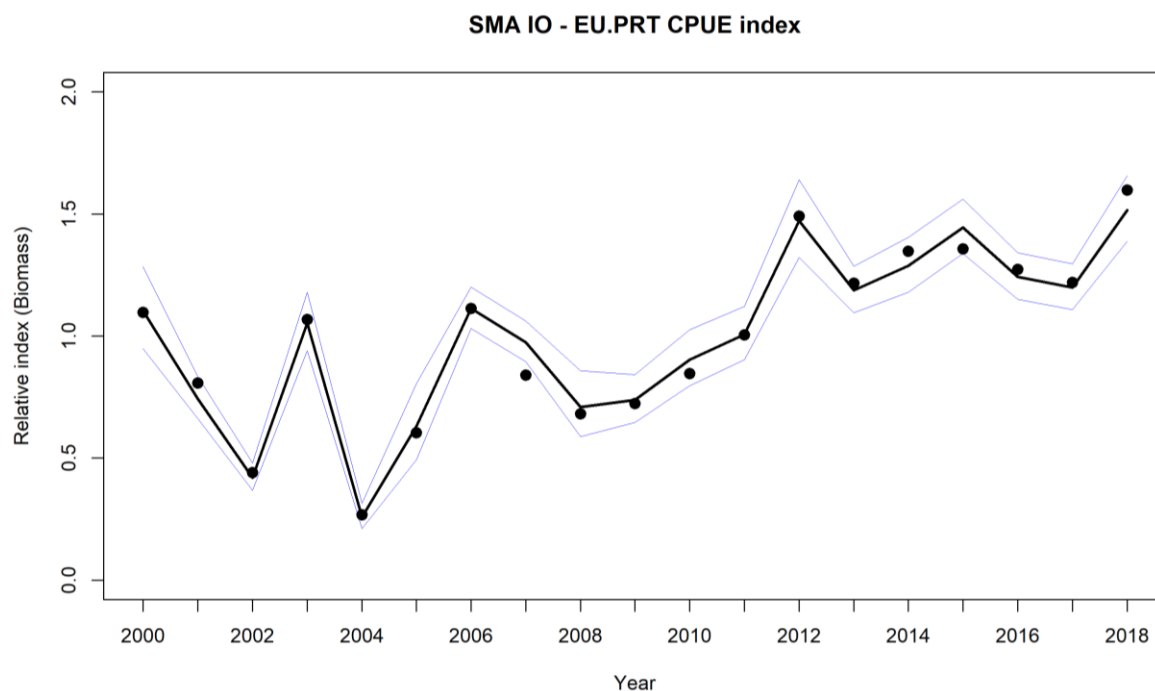


**Figure 8.** Residual analysis for the final Tweedie GLM model for the SMA CPUE standardization in the Indian Ocean. In the plot it is presented the histogram of the distribution of the residuals, the QQPlot and the residuals along the fitted values on the log scale.

### 3.2.3. SMA standardized CPUE series

Given the goodness-of-fit of the various candidate models and the comparisons from the sensitivity analysis for the target effects, as well as the previous sensitivity runs described by Coelho et al. (2013, 2014), the final standardized CPUE series recommended to be used as indicator of relative abundance for shortfin mako is shown in **Figure 9**. This model accounts for the main simple effects Year, Quarter, Area and Ratio, as well as interactions between Quarter : Area and Quarter : Ratio.

The final standardized SMA CPUE index (kg/1000 hooks) for the Portuguese pelagic longline fishery in the Indian Ocean between 2000-2018, suggested to be used as a relative abundance index, is shown in **Figure 9** and **Table 3**. On this final model, the relative index showed high variability in the earlier years until 2008, followed by a general increasing trend in the more recent years (**Figure 9**). This index could be considered to be used in future stock assessments for this species.



**Figure 9.** Standardized CPUE series for SMA captured by the Portuguese pelagic longline fleet in the Indian Ocean using a Tweedie GLM. The solid black line refers to the standardized index, the blue lines refer to 95% confidence intervals and the black dots to the nominal CPUE series. Both series are shown in relative values (scaled to 1) for comparison purposes.

**Table 3.** Standardized SMA CPUE index (kg/1000 hooks) for the Portuguese pelagic longline fleet in the Indian Ocean between 2000 and 2018, for use as a relative biomass index indicator. The table includes the standardized CPUE index value, the 95% confidence intervals (CI) and the coefficient of variation (CV, %).

Year	Stdz CPUE (Kg/1000 hks)	Upper CI (95%)	Lower CI (95%)	CV (%)
2000	113.4	132.0	97.5	28.2
2001	76.5	85.9	68.0	32.9
2002	43.1	49.3	37.8	37.8
2003	108.3	121.3	96.6	30.5
2004	26.6	32.4	21.8	42.6
2005	64.7	82.7	50.6	32.9
2006	114.4	123.4	106.0	36.2
2007	100.2	109.1	92.0	34.6
2008	72.9	88.1	60.4	32.7
2009	75.9	86.5	66.5	32.4
2010	92.9	105.4	81.9	30.2
2011	103.5	115.3	92.9	30.5
2012	151.3	168.5	135.9	27.4
2013	122.0	132.2	112.6	32.6
2014	132.3	144.4	121.3	28.7
2015	148.5	160.4	137.5	31.2
2016	127.7	137.9	118.3	32.7
2017	123.2	133.3	113.9	33.0
2018	155.8	170.2	142.6	28.6

#### 4. Acknowledgments

Sampling and data collection from the Portuguese fishery were mainly obtained and funded by PNAB - *Programa Nacional de Amostragem Biologica* within the scope of the EU Data Collection Framework (DCF). The authors wish to thank the fishery observers for the onboard data collection, and the skippers for participating in the data collection program. Daniela Rosa and Catarina Santos are supported by FCT PhD grants (Refs SFRH/BD/136074/2018 and SFRH/BD/139187/2018, respectively) through National Funds and the European Social Fund.

#### 5. References

- Afonso, A.S., Hazin, F.H.V., Carvalho, F., Pacheco, J.C., Hazin, H., Kerstetter, D.W., Murie, D., Burgess, G.H. 2011. Fishing gear modifications to reduce elasmobranch mortality in pelagic and bottom longline fisheries off Northeast Brazil. *Fisheries Research*, 108: 336–343.
- Bivand, R. 2013. classInt: choose univariate class intervals. R package version 0.1-21. <http://CRAN.R-project.org/package=classInt>.
- Bivand, R., Lewin-Koh, N. 2013. maptools: Tools for reading and handling spatial objects. R package version 0.8-27. <http://CRAN.R-project.org/package=maptools>.
- Coelho, R., Lino, P.G., Santos, M.N. 2011. Standardized CPUE of major shark species caught by the Portuguese longline fishery in the Indian Ocean. IOTC Working Document. OTC–2011–WPEB07–36.
- Coelho R., Fernandez-Carvalho J., Lino P.G. & Santos M.N. 2012a. An overview of the hooking mortality of elasmobranchs caught in a swordfish pelagic longline fishery in the Atlantic Ocean. *Aquatic Living Resources*, 25: 311-319.
- Coelho, R., Lino, P.G., Santos, M.N. 2012b. Standardized CPUE for the shortfin mako (*Isurus oxyrinchus*) caught by the Portuguese pelagic longline fishery. ICCAT SCRS/2012/072. 15pp.
- Coelho, R., Santos, M.N., Lino, P.G. 2013. Standardized CPUE series for blue and shortfin mako sharks caught by the Portuguese pelagic longline fishery in the Indian Ocean between 1999 and 2012. IOTC Working Document. IOTC–2013–WPEB09–22.
- Coelho, R., Santos, M.N., Lino, P.G. 2014. Blue shark catches by the Portuguese pelagic longline fleet between 1998-2013 in the Indian Ocean: Catch, effort and standardized CPUE. IOTC-2014-WPEB10-24. 32pp.
- Coelho, R., Santos, M.N., Lino, P.G. 2015a. Standardized CPUE of blue shark in the Portuguese pelagic longline fleet operating in the north Atlantic. ICCAT SCRS/2015/037. 31pp.
- Coelho, R., Mejuto, J., Domingo, A., Liu, K-M., Cortés, E., Yokawa, K., Hazin, F., Arocha, F., Silva, C., Mwilima, A.M., García-Cortés, B., Ramos-Cardelle, A.M., Lino, P.G., Forselledo, R., Mas, F., Ohshima, S., Tsai, W-P-, Carvalho, F., Santos, M.N. 2015b. Distribution patterns of the blue shark *Prionace glauca* in the Atlantic Ocean, from observer data of the major fishing fleets. ICCAT SCRS/2015/039. 24pp.
- Coelho, R., Rosa, D., Lino, P.G. 2016. Fishery indicators for the shortfin mako shark (*Isurus oxyrinchus*) caught by the Portuguese pelagic longline fishery in the Atlantic: nominal CPUEs, catch-at-size and at-haulback mortality. ICCAT SCRS/2016/072. 13pp.

- Coelho, R., Mejuto, J., Domingo, A., Yokawa, K., Liu, K-M., Cortés, E., Romanov, E., da Silva, C., Hazin, F., Arocha, F., Mwilima, A.M., Bach, P., Ortiz de Zarate, V., Roche, W., Lino, P.G., García-Cortés, B., Ramos-Cardelle, A.M., Forselledo, R., Mas, F., Ohshimo, S., Courtney, D., Sabarros, P.S., Perez, B., Wogerbauer, C., Tsai, W-P., Carvalho, F., Santos, M.N. (2017 - In Press). Oceanic-wide distribution patterns and population structure of blue shark (*Prionace glauca*) in the Atlantic and Indian oceans. *Fish and Fisheries*. DOI: 10.1111/faf.12238
- Coelho, R., Rosa, D., Lino, P.G., 2017. Fishery indicators for shortfin mako shark (*Isurus oxyrinchus*) caught by the Portuguese pelagic longline fishery in the Indian Ocean: Catch, effort, size distribution and standardized CPUEs. IOTC–2017–WPEB13–35.
- Dunn, P.K. 2014. tweedie: Tweedie exponential family models. R package version 2.2.1.
- Fay, M.P., Shaw, P.A. 2010. Exact and asymptotic weighted logrank tests for interval censored data: the interval R package. *J. Stat. Softw.*, 36 (2): 1-34.
- Fernandez-Carvalho, J., Coelho, R., Mejuto, J., Cortés, E., Domingo, A., Yokawa, K., Liu, K.M., García-Cortés, B., Forselledo, R., Ohshimo, S., Ramos-Cardelle, A.M., Tsai, W.P., Santos, M.N. 2015. Pan-Atlantic distribution patterns and reproductive biology of the bigeye thresher, *Alopias superciliosus*. *Reviews in Fish Biology and Fisheries*, 25: 551–568.
- Fox, J., Weisberg, S. 2011. An R Companion to Applied Regression, Second Edition. Thousand Oaks CA: Sage.
- Gerritsen, H. 2014. mapplots: Data Visualisation on Maps. R package version 1.5. <http://CRAN.R-project.org/package=mapplots>.
- Gross, J., Ligges, U. 2012. nortest: tests for normality. R package version 1.0-2. <http://CRAN.R-project.org/package=nortest>.
- He, X., Bigelow, K.A., Boggs, C.H. 1997. Cluster analysis of longline sets and fishing strategies within the Hawaii-based fishery. *Fish. Res.*, 31: 147-158.
- Højsgaard, S., Halekoh, U., Robison-Cox, J., Wright, K., Leidi, A.A. 2014. doBy: Groupwise statistics, LSmeans, linear contrasts, utilities. R package version 4.5-13. <http://CRAN.R-project.org/package=doBy>.
- Ichinokawa, M., Brodziak, J. 2010. Using adaptive area stratification to standardize catch rates with application to North Pacific swordfish (*Xiphias gladius*). *Fisheries Research*, 106: 249-260.
- Lenth, R. 2015. lsmeans: Least-Squares Means. R package version 2.20-2. <http://CRAN.R-project.org/package=lsmeans>
- Levene, H. 1960. Robust tests for equality of variances. In: Olkin, I., Ghurye, S.G., Hoeffding, W., Madow, W.G., Mann, H.B. (Eds) *Contributions to Probability and Statistics: Essays in Honor of Harold Hotelling*. Stanford University Press, pp 278-292.
- Lilliefors, H.W. 1967. On the Kolmogorov-Smirnov test for normality with mean and variance unknown. *J Am Statist Assoc*, 62: 399-402.
- Manly, B. 2007. *Randomization Bootstrap and Monte Carlo Methods in Biology*, 3rd ed. Chapman & Hall/CRC, New York.

- Mejuto, J., García-Cortés, B., Ramos-Cartelle, A. 2008. Standardized catch rates in biomass for the swordfish (*Xiphias gladius*) caught by the Spanish longline fleet in the Indian Ocean for the period 1993-2007. IOTC Working Document. IOTC-2008-WPB-06.
- Mejuto, J., García-Cortés, B., Ramos-Cartelle, A., Serna, J.M. 2009. Scientific estimations of by-catch landed by the Spanish surface longline fleet targeting swordfish (*Xiphias gladius*) in the Atlantic Ocean with special reference to the years 2005 and 2006. *Collect Vol Sci Pap ICCAT*, 64: 2455-2468.
- Mejuto, J., García-Cortés, B., Ramos-Cartelle, A., De la Serna, J.M., González-González, I. 2012. Standardized catch rates of shortfin mako (*Isurus oxyrinchus*) caught by the Spanish surface longline fishery targeting swordfish in the Atlantic Ocean during the period 1990-2010. ICCAT SCRS/2012/046. 12pp.
- Ramos-Cartelle, A., García-Cortés, B., Fernández-Costa, J., Mejuto, J. 2011. Standardized catch rates for the swordfish (*Xiphias gladius*) caught by the Spanish longline in the Indian Ocean during the period 2011-2012. IOTC Working Document. IOTC-2011-WPB09-23. 19pp.
- Ortiz, M., Mejuto, J., Paul S., Yokawa, K., Santos M.N. 2010. An updated biomass index of abundance for north Atlantic swordfish 1963-2008. *Col. Vol. Sci. Pap., ICCAT*, Madrid, 65(1): 171-184.
- R Core Team. 2019. R: A language and environment for statistical computing. R Foundation for Statistical Computing, Vienna, Austria. URL <http://www.R-project.org/>.
- Ramos-Cartelle, A., García-Cortés, B., Fernández-Costa, J., Mejuto, J. 2011. Standardized catch rates for the swordfish (*Xiphias gladius*) caught by the Spanish longline in the Indian Ocean during the period 2011-2012. IOTC-2011-WPB09-23. 19pp.
- Richard, A. Becker, R.A., Wilks, A.R., Brownrigg, R., Minka, T.P. 2014. maps: Draw Geographical Maps. R package version 2.3-9. <http://CRAN.R-project.org/package=maps>.
- Santos, M.N., Garcia, A., Pereira, J.G. 2002. A historical review of the by-catch from the Portuguese surface long-line fishery: observations on blue shark (*Prionace glauca*) and short-fin mako (*Isurus oxyrinchus*). *Col. Vol. Sci. Pap. ICCAT*, 54: 1333-1340.
- Santos, M.N., Coelho, R., Lino, P.G., Fernandez-Carvalho, J. 2013a. Preliminary observations on the elasmobranchs bycatch-at-size and sex-ratios on the Portuguese pelagic longline fishery in the Atlantic Ocean. *Standing Committee on Research and Statistics Document*, SCRS/2013/039. 17pp.
- Santos, M.N., Coelho, R., Lino, P.G. 2013b. Standardized CPUE for swordfish (*Xiphias gladius*) caught by the Portuguese pelagic longline fishery in the North Atlantic. ICCAT SCRS/2013/104. 11pp.
- Shono, H. 2008. Application of the Tweedie distribution to zero-catch data in CPUE analysis. *Fisheries Research*, 93: 154–162.
- Smyth, G., Hu, Y., Dunn, P., Phipson, B., Chen, Y. 2015. statmod: Statistical Modeling. R package version 1.4.21. <http://CRAN.R-project.org/package=statmod>.
- Stabler, B. 2013. shapefiles: read and write ESRI shapefiles. R package version 0.7. <http://CRAN.R-project.org/package=shapefiles>.
- Vega, R., Licandeo, R. 2009. The effect of American and Spanish longline systems on target and non-target species in the eastern South Pacific swordfish fishery. *Fisheries Research*, 98: 22-32.

- Wang, S-P., Nishida, T. 2014. CPUE standardization with targeting analysis for swordfish (*Xiphias gladius*) caught by Taiwanese longline fishery in the Indian Ocean. IOTC–2014–WPB12–22. 25pp.
- Ward, P., Lawrence, E., Darbyshire, R., Hindmarsh, S. 2008. Large-scale experiment shows that nylon leaders reduce shark bycatch and benefit pelagic longline fishers. Fisheries Research, 90: 100-108.
- Wickham, H. 2009. ggplot2: elegant graphics for data analysis. Springer New York.